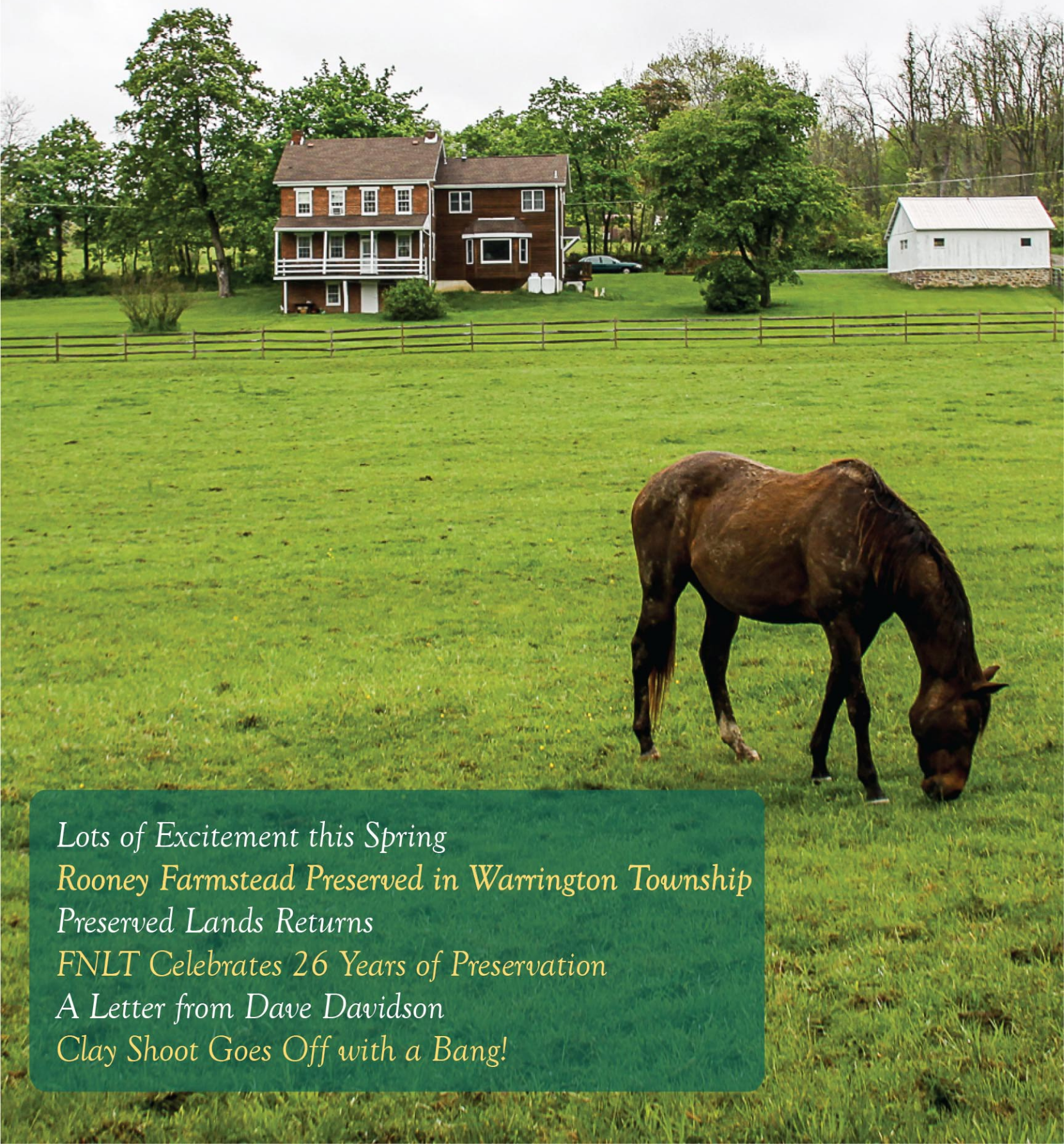




Farm & Natural
Lands Trust of
York County

Spring 2016

PRESERVATION QUARTERLY



*Lots of Excitement this Spring
Rooney Farmstead Preserved in Warrington Township
Preserved Lands Returns
FNLTL Celebrates 26 Years of Preservation
A Letter from Dave Davidson
Clay Shoot Goes Off with a Bang!*



LOTS OF EXCITEMENT THIS SPRING

Farm & Natural Lands Trust is a private non-profit 501 (c) (3) organization recognized by the IRS as a qualified recipient of land conservation interests. Contributions to FNLТ are tax deductible to the extent allowed by law.

Board of Directors 2016

- J.T. Hand – *President*
- David M. Davidson, Jr. – *Vice President*
- Hunter Mink – *Treasurer*
- Felicia Dell – *Secretary*
- Brady Barnes
- Sarah Brown
- Kelly Dearman
- Julie Flinchbaugh-Keene
- Steven Gross, Jr.
- Paul Heffelfinger
- John F. Linton
- June Lloyd
- Ann Luciani
- Scott Michael
- Gregory Myers
- Matthew Scarpato
- Alex Snyder
- Brian Strong
- Tom Warman

Staff

- Sean P. Kenny
Executive Director
- Rochelle Black
Operations Manager

The FARM & NATURAL LANDS TRUST has preserved over 9,000 acres to date.

To contact us:
717.843.4411
skenny@farmtrust.org

Greetings! I hope this message finds you keeping well and enjoying the beauty of springtime in York County and beyond. As if we are ever NOT busy in the office, things are moving along quickly with FNLТ. We're working on several conservation easements, with one to report to you on in this PQ, Paddy & Sally Rooney. I've gotten to know Paddy through the Downtown York Rotary Club where he's going in as President this year. He's quite a character and they're both great folks, so if you see them, thank them for preserving their property with FNLТ.

Other recent news: the York County Commissioners voted to place conservation easement with FNLТ on the Horn Farm property. I've had the pleasure of working with the staff and board of the Horn Farm Center for Education, as well as several officials from the County of York, in making this dream a reality in Hellam Township. The preservation of the Horn Farm not only strengthens the HFCFE's great work, but preserves a landscape along Route 30 of some of the finest soils that have been in production for over 250 years.

Along with our recent Annual Meeting and Clay Shoot, plus other scheduled events, we're bringing back our successful collaboration with York Art Association with a second installment of the *Preserved Lands* exhibit. Starting soon, 40 regional artists will venture out to FNLТ preserved properties to paint, photograph and work with mixed media, to be placed on display in December at Marketview Arts in Downtown York. Mark your calendars for the evening of (First) Friday, December 2nd for the grand opening celebration!

As for me, my wife Laura and I welcomed a new addition last July, a now not so little boy named Oscar Martin Kenny. He's a real joy and he loves being outside more than anything. Many got to say hello Oscar at our Annual Meeting at Spoutwood Farm where he spent a lot of time giggling in the grass. We hope to see you out and about at FNLТ events later this year, or just enjoying the outdoors in general! Thank you for your support of FNLТ and keep well.

Photo by Sweet D.E. Photography



ROONEY FARMSTEAD PRESERVED IN WARRINGTON TOWNSHIP

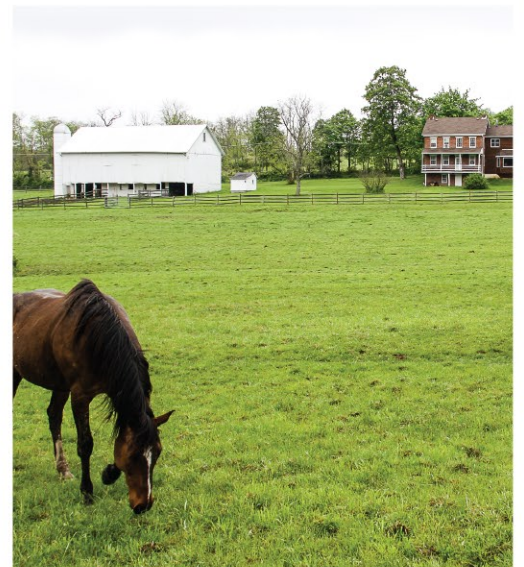
Sally and Paddy Rooney had known of their current property well before they purchased it because it was, for many years, site of the Beaufort Hunt Club annual Hunter Trials. Owned by Mrs. Ann Barclay, the farm of some 100 acres was used by her to breed horses and the many jumps built into the fence lines testified to the jumping she did as part of her own interest in fox-hunting. As fellow devotees of the sport and looking for a place to keep their own horses, they worked with Ann Barclay to purchase the land in three plots totaling 23 acres over the next few years.

Moving into the 1836 brick farmhouse in 1983, Sally and Paddy raised both their children there, adding an addition of family room and master bedroom in 1990. The small farm remains to this day checkered with horse fence and jumps. It consists mostly of pasture, some wetlands and a pond.

Over the years we have grown to love this little farm. But our concern is that, since we have more than half a mile of road frontage, that it could be ripe for development. Our land is also adjacent to a somewhat larger farm which is already in conservation with the County of York and it, in turn, is bordered by an even larger farm property which is also being placed in conservation with the FNLT. It therefore seemed appropriate that we continue this extension of what will be some 200 contiguous acres in a conservation program. Finally the land adjacent to us (Central Penn Sporting Clays) and the land above us (Warrington Gun Club) means that there is more than an additional 350 acres also preserved for wildlife and agriculture. With the increasing development pressure from Carroll Township above us and Dover Township below us, it seems good that Warrington Township can remain more of a rural and agricultural belt for Northern York County.

Paddy Rooney is retired from parish ministry as a Lutheran Pastor but remains active with various groups in York including the Rotary club and the York County Heritage Trust. Sally continues to work in the mental health field.

Paddy sums up their joint decision to preserve when he says: *We have loved this farm over the 33 years we have lived here. It is our hope that we will live here for yet a few more. But because of our love for it...seeing the foxes and their cubs playing in the fields in the early morning, watching the horses gallop across the pastures, viewing deer by the dozen or pheasants coming around the feeder or that lovely family of red tailed hawks who live in the woods above us, means so much to us and we want to see this place preserved so that others may enjoy it into the future. We are glad and deeply satisfied knowing that now, this land we love will be preserved indefinitely.*

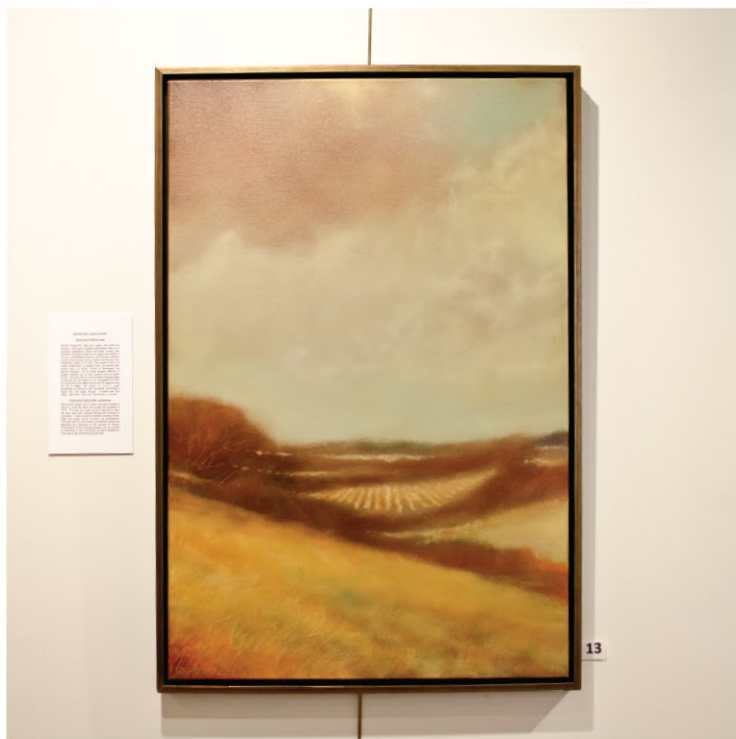


PRESERVED LANDS RETURNS

Farm & Natural Lands Trust of York County is very pleased to announce that we're bringing the *Preserved Lands* exhibit back in 2016! This collaborative event with York Art Association will be bringing over 40 regional artists to preserved FNLТ properties throughout the year. In December, we'll hold a month long series of celebrations at the gallery's host location, Marketview Arts in Downtown York, which is now run by York College of Pennsylvania.

Starting soon, the artists will venture out to FNLТ preserved properties to paint, photograph and work with mixed media, all of which will be displayed at Marketview Arts. Mark your calendars for the evening of (First) Friday, December 2nd for the grand opening celebration and be among the first to marvel at the variety of our picturesque landscapes.

Special thanks to the Cultural Alliance of York County who is working with FNLТ and YAA to make this amazing collaborative event a success. To hold you over until December, here are some photos from the *Preserved Lands* exhibit in 2012 – enjoy!



FNLTY CELEBRATES 26 YEARS OF PRESERVATION

The Springtime weather could not have been much wetter this year, however the clouds departed for two fine days in May for the FNLTY Annual Meeting and Clay Shoot. For the Annual Meeting, FNLTY supporters ventured deep into Codorus Township, many for their first ever visit to Spoutwood Farm.

FNLTY's Executive Director Sean Kenny was on double duty, first as traffic director and then to kick off the Annual Meeting with an update on all things FNLTY. One nice surprise was guests County Commissioner Doug Hoke and Horn Farm Center for Education Director Alyson Earl. Sean told the crowd that the long hoped for preservation of the Horn Farm in Hellam Township has been approved by the County of York, and will be taking place over the coming months. From there, we also announced the 27th Annual Meeting of FNLTY will take place Thursday, May 18th at the Horn Farm, which should be a nice celebration.

From there, newly elected FNLTY Board President JT Hand gave a talk on his passion for FNLTY, as well as a touching tribute to outgoing President Dave Davidson. You'll learn more about JT in the next Preservation Quarterly.

Attendees enjoyed a presentation from Spoutwood Farm owners Rob & Lucy Wood. It's hard to believe the activity that comes with this 26 acre farm. Spoutwood Farm is a 501c3 organization, they're most known for their annual Faerie Festival, having just completed the 25th year of the event. In addition, they host a variety of other festivals, year round educational programs and a Community Supported Agriculture (CSA) of produce right on the farm. For more information on Spoutwood Farm please visit www.spoutwood.org.





THANK YOU TO OUR 2015 CORPORATE SPONSORS

Land Steward

Glatfelter Insurance Group
PeoplesBank

Preservationist

CGA Law Firm
C.S. Davidson, Inc.
The Graham Group
KBG Law

Conservationist

Mr. & Mrs. Louis J. Appell, Jr.
Aquatic Resource Restoration Co.
Block Business Systems
Brown's Orchards & Farm Market
Flying Feet Sport Shoes
Keller-Brown Insurance Services
M&T Bank
ParenteBeard Wealth Management
RKL – Reinsel Kuntz Leshner
Site Design Concepts, Inc.
White Rose Bar & Grill
YC Precision Fabrication
The York Water Company

Contributor

Barley Snyder
Barton Associates
Body Mind & Spirit
Fulton Bank
Rock Commercial Real Estate
SF & Company
Shipley Energy
York Ag Products
York Traditions Bank

A LETTER FROM DAVE DAVIDSON

Every organization benefits from an occasional change in leadership, and Farm & Natural Lands Trust of York County is no different. After more than six years as President of this fine organization, I decided to step down and let the new President, JT Hand, take the helm. I'm certain FNLТ will continue to flourish under his leadership.

I first joined the Board in 2002. At that time, Jackie Kramer was the Executive Director, and the Trust had a staff of three (one more than today). FNLТ has always been an efficient organization, and it has become even more so during Sean Kenny's tenure. Rochelle Black has been with FNLТ since the very beginning, and provides invaluable expertise in negotiating, drafting, and monitoring our conservation easements.

I was appointed President in 2009. One of my first tasks was to oversee the development of a long-range strategic plan for the Trust. This plan has served us well, keeping us on task and committed to our mission of land preservation.

Another objective was to ensure the long-term financial viability of the Trust. In 2012, we were incredibly fortunate to have the Glatfelter family donate a farm near Spring Grove, which we subsequently eased and then sold to a local farmer. That donation enabled the Trust to create an endowment fund that should provide financial security in perpetuity.

FNLТ currently holds conservation easements nearing 10,000 acres of land in York County, many of which were simply donated by property owners wishing to preserve their land. While we still accept donated easements, we have recently adopted a more strategic approach. With the assistance of the York County Planning Commission's GIS department, we can apply our own selection criteria to every property in the County. This enables us to discern areas of high-scoring properties, which is where we focus our educational efforts. The County Commissioners have been very supportive of this initiative, since it advances the County's Comprehensive Plan while preserving farms and natural lands.

FNLТ has come a long way in the last few years, but there are many new challenges to be addressed: the possibility of land ownership by FNLТ, coordination of land preservation efforts on a County-wide basis, and of course the ongoing race to preserve our land before it's too late. Farm & Natural Lands Trust of York County is a great organization doing great work. I'll continue to support the Trust in whatever ways I can.

Clay Shoot Goes Off with a Bang!

FARM & NATURAL LANDS TRUST PRESENTED BY **PEOPLESBank**
EIGHTH ANNUAL SPORTING CLAY SHOOT
 You're Welcome Here!

EVENT SPONSORS:
 Precision Fabrication, ParenteBeard, CCA, M&T Bank, GRAHAM GROUP, rkl, FARM & NATURAL LANDS TRUST

TEAM SPONSORS:
 Barley Snyder, Brown Advisory, Lee Fence & Outdoors, LLC, Signal Machine Company, York Ag Products, York Traditions Bank

CATERED BY: WHITE ROSE BAR & GRILL
SIGNS BY: CONCEPTS



Following a sunny Annual Meeting, FNLТ staff and supporters headed north to Wellsville for the 8th Annual FNLТ Clay Shoot. Many of the long time shooters said not only was this the best weather in the history of the event, also some of the tweaks made to the event setup made it the most enjoyable yet.

Thank you to PeoplesBank for their continued support, and congratulations to the winning shooters!

- 1st Place Team:* **M&T Bank** – Score of 292
- 2nd Place Team:* **York Ag Products Team #1** – Score of 287
- 3rd Place Team:* **The Floaters** – Score of 284
- 1st Place Individual:* **Dave deFernelmont** – Score of 71
- 2nd Place Individual:* **Nathan Lightner** – Score of 68
- 3rd Place Individual:* **Gregg Bard** – Score of 66



Thank you to Block Business Solutions for donating printing of FNLТ's Preservation Quarterly

block
Business Solutions





Farm & Natural Lands Trust of York County

156 North George Street, Suite 300
York, Pennsylvania 17401

Non-Profit Org.
U.S. Postage
PAID
York, PA
Permit No. 600

PRESERVATION QUARTERLY *Newsletter*

FARM & NATURAL LANDS TRUST MEMBERSHIP FORM

Yes, I believe in balancing the protection of our precious land resources with growth. My contribution to the Trust will be used to preserve York County's productive and unique natural lands. Please check your contribution below.

- | | |
|--------------------------------|--|
| _____ \$10,000+ Lifetime Donor | |
| _____ \$5,000+ Leadership | _____ \$100+ Contributor |
| _____ \$1,000+ Benefactor | _____ \$50+ Family |
| _____ \$500+ Sustaining | _____ \$30+ Individual |
| _____ \$250+ Sponsor | _____ \$15+ Senior Citizen
or Student |

Please find enclosed my/check for membership dues in the amount of \$ _____ payable to: **Farm & Natural Lands Trust.**

Name _____

Address _____

City _____ State _____ Zip _____

Phone _____ E-mail _____

Credit Card Info: _____ Visa _____ MC Name on Card (if different than above): _____

Number: _____ Expiration: _____ Last 3 digits on back of card: _____

Note:

To initiate a matching employer contribution, please notify your employer of your gift.

The Farm & Natural Lands Trust of York County sincerely thanks you for your support and generosity.

I would like to receive an information packet about preserving my land.

A copy of the official registration and financial information may be obtained from the PA Dept. of State by calling toll-free within PA: 1-800-732-0999. Registration does not imply endorsement.